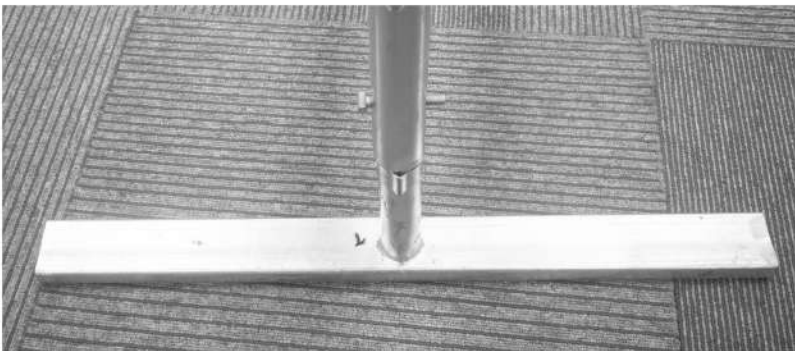


# CrowdMaster™ Barricade Assembly



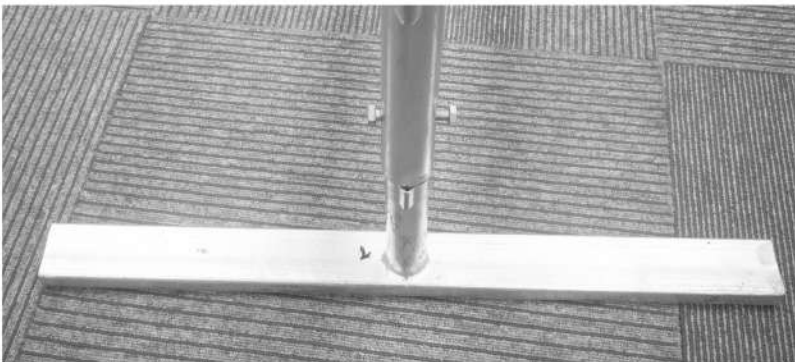
**1**

Position the barricade frame over the foot, and lower the frame onto the leg of the foot.



**2**

Insert the bolt (supplied) through the hole on the lower portion of the frame.



**3**

Place nut on the bolt end and finger tighten.



**4**

Using a wrench tighten the nut.

**5**

-Repeat with the foot at the other end of the barricade.



Ensure nuts are fully tightened before use.