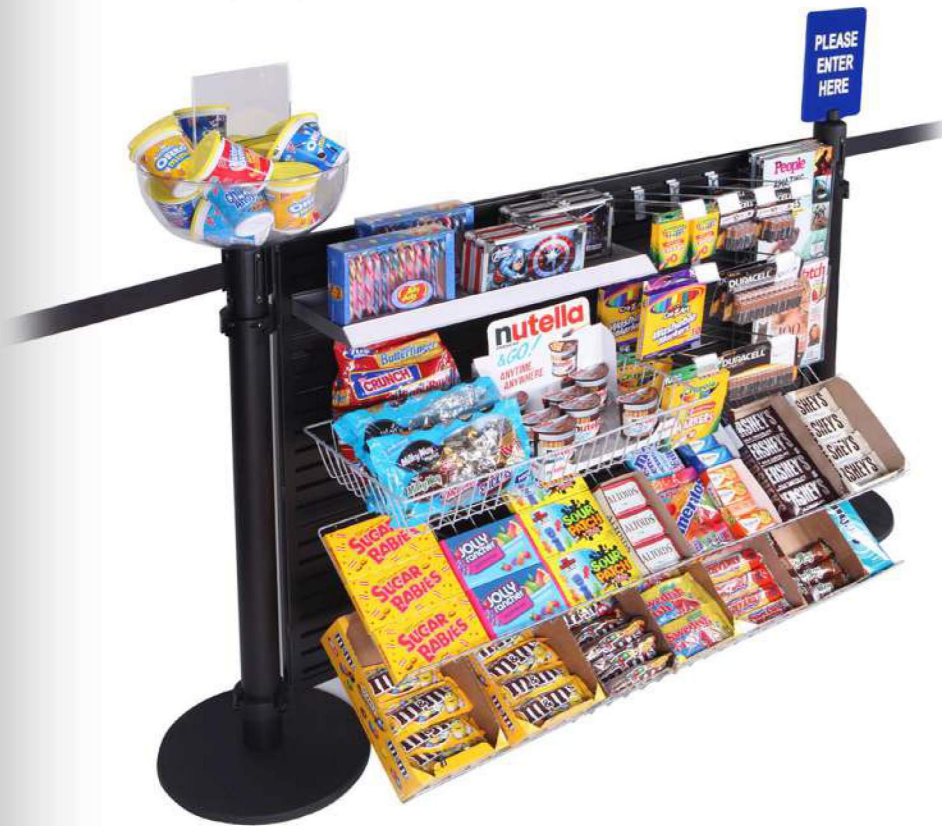


This is the only queue merchandizing system that does not require the purchase of new stanchions; it works with most brands of belt barrier. The panel's design allows for fast, easy installation without the need to lift heavy panels above the posts. Multiple panels can be connected to create a run of any size. The panel will accept a wide range of slatwall accessories and the post tops can be fitted with our Display Bowl for increased capacity.



Available with Display Bowls



Wide range of accessories



Multiple panels can be connected to make a run of any size

System Components



Post Collar

Fits any 2" or 2.5" dia belt barrier.



Standard Height Panel

36"/914mm High x 49"/1.24m Wide
Weight: 32 lb / 14.5 kg



Extra Height Panel

48" / 1.22m High x 49"/1.24m Wide
Weight: 41 lb / 19 kg

Simple Assembly



1. Attach collar to post bottoms.



2. Lift panel 6" / 150mm and set in the lower collars.



3. Pivot the panel up into place.



4. Attach collar to post tops.

Accessories



49"/1245mm x 9"/230mm
Flat Metal Shelf



22"/560mm x 12"/300mm
Slant Basket



Acrylic Pockets



49"/1245mm x 12"/305mm
Flat Metal Shelf



6"/150mm
Hook



Saddle Tray



49"/1245mm x 9"/305mm
Slant Wire Shelf



12.5"/320mm Diameter
Display Bowl



Divided Tray



49"/1245mm x 12"/305mm
Slant Wire Shelf



Magazine Holder